

# Synthetic and Natural Turf Irrigation BOOSTER PUMP

Whether you maintain a professional synthetic turf sports field or the natural turf playing fields of the local recreational park, PPS can help keep them clean, healthy, and looking their best with an irrigation booster pump system designed specifically for synthetic and natural turf applications with the high flow and pressure required for even large pop-up water cannons to reach across the entire playing surface.



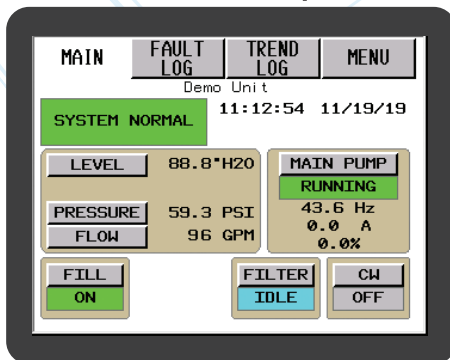
\*Includes back flow preventer



The **VEGA** series is a robust, powerful pumping system designed for synthetic and natural turf irrigation.

- Engineered for long-term reliability
- Innovative, easy to use touchscreen
- Unlimited, personalized technical support
- Remote control and monitoring available

### Color Touch Screen Operation



### Booster Pump Performance & Power Options

#### FLOW

150 – 500 GPM

#### ELECTRICAL INPUT OPTIONS

208 Volt / 3 Phase / 60 Hz  
240 Volt / 1 Phase / 60 Hz  
240 Volt / 3 Phase / 60 Hz  
480 Volt / 3 Phase / 60 Hz

#### PRESSURE

Up to 150 PSI  
Operating Pressure

#### HORSEPOWER

5 – 40 HP  
Depending On  
System Type

### Pride in Craftsmanship

- Family owned & operated for more than 45 years
- All PPS products are tested & certified for exceptional quality
- Designed, engineered & manufactured in the USA



### Innovative Smart Controls

- User friendly color touch screen operation
- System redundancy throughout for 100% operational backup
- Monitor system performance and operation history from anywhere



### Fast Turn-Around/Easy to Install

- Super fast delivery—Quick turn Pump Station typically ships within 2 to 3 weeks
- Completely assembled, pre-wired, tested and ready to install
- Forklift-ready for lifting—just place it, connect it and pump



### Designed to Preserve & Protect

- Fully enclosed and protected internal electronics
- Durable marine grade aluminum enclosure construction
- Stainless steel, galvanized or powder-coated piping





## Watering Synthetic Turf: A Unique Application For Irrigation

While these surfaces do not have the growing and maintenance needs of natural grass, synthetic turf does require its own set of Best Management Practices for playability and long-term sustainability.

### Why Irrigate Synthetic Turf Fields?

The Synthetic Turf Council recommends periodic watering via irrigation sprinklers:

- To flush contaminants such as dust, dirt, bodily fluids, etc. through the system. A properly constructed synthetic field enables water to quickly drain down through granulated rubber in-fill into a sub-surface drainage system that carries it out to purification facilities.
- Help preserve and compact sand and infill materials ensuring the surface performs as intended.
- To break the static cling between synthetic-turf fibers and the rubber in-fill material, which will eliminate the dark look of a field after maintenance or games; it also makes the turf fiber stand up and look like it's supposed to.
- To mitigate heat as much as 20° f through evaporative cooling for a period of about 45 minutes after watering.

***These recommendations apply to both long-fiber infill systems (such as for football and soccer) and short-fiber systems (such as for field hockey, baseball or tennis).***

#### VEGA Features

- Flows to 500 GPM
- Variable Speed
- All Control Components Enclosed
- Simple HMI Operation
- 100% Powder Coated
- Isolation Valves Intake / Discharge

- Centrifugal, Multi-Stage, Turbine or Submersible Turbines
- Single or Multiple Pumps
- Easy Operation & Maintenance
- 48" X 66" Footprint

#### VEGA Optional Features

- Powder Coated Enclosure
- Flow Meter
- Insulation
- Heater
- Automatic Filtration
- Remote Control and Monitoring

#### INDUSTRY LEADING WARRANTY:

PPS warrants that its products and systems will be free from defects in material and workmanship for a period of three (3) years from the date of placing the equipment in operation or forty (40) months from the date of completion of manufacture of the equipment, whichever shall occur first.

**+ PLUS 25 Year Rust Through Warranty on All Galvanized Steel Components +**



For more information on PPS pump systems:

**GoPPS.us • 208.323.5300**

